



Grace Presbytery

missional. relational.
connectional.



Greetings Friends,

It has been a busy month around the West Region, and I am sure you are all busy finalizing your Holy Week and Easter Sunday worship services. My prayers are with each of you during this busy time of year.

May each of your days be blessed with the expected and the unexpected and may you catch a glimpse of God at work in all that you do.

Sharon



April Lunch Gatherings...

*Due to scheduling conflicts we will be mixing things up a bit for April.
Please note the day/date changes. I hope you can join us!*

- April 14 – Tuesday - Fort Worth 12:00 Flower Child, 1616 S University Dr, Fort Worth, TX 76107
- April 15 – Wednesday - Arlington 12:00 The Porch, 2504 Little Rd, Arlington, TX 76016
- April 23 - Thursday - West 12:00 Heim BBQ, 1910 S. Main St, Weatherford, TX 76086
- April 28 – Tuesday - Mid-Cities/Denton 12:00 Panera Bread, 2925 Heritage Trace Pkwy, Fort Worth



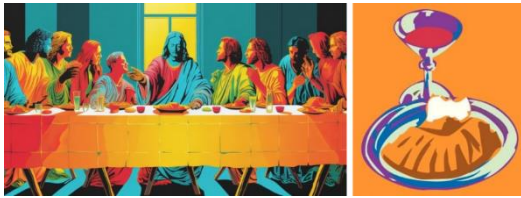
Can't make one of our scheduled gatherings? I would love to meet with you by phone or in person. [Click here to schedule a time.](#)



Small Church Zoom

Monday, April 13 7:00 pm

Join us to learn all about the Commissioned Pastors program and how it can help our small churches have sustainable leadership. Rev. Kristin Rice, Moderator of the Commissioned Pastor Sub Committee will lead a discussion about what a Commissioned Pastor is; what is required, discerning God's call and more. email sharon@gracepresbytery.org to receive your Zoom link.



Communion Training,

Saturday, May 9, 11:00-3:00

Highland Presbyterian Church, Tyler

Is your church without pastoral leadership? Has your Session discerned a need for communion table leadership? Communion training is available to approved ruling elders serving churches who do not currently have a serving pastor. We cover Communion from theological, spiritual, and denominational perspectives, as well as hands-on practice. You will be given a binder full of reading material and liturgical materials you can use. Lunch is provided.

If you are interested, please discern prayerfully with your Session if this is something you are called to do. Contact your RMA for more information.

Contact: Sharon Curry at sharon@gracepresbytery.org, or Michele Goff at michele@gracepresbytery.org, or Lisa Wraith at lisa@gracepresbytery.org



Did you know the Board of Pensions now offers child care support options???

New in 2026, **Child Care Support** is available for eligible PC(USA) ministers of the Word and Sacrament and commissioned pastors with children ages 0-6 years to offset a portion of their child care needs. **Ap**Learn more here...[Child Care Support - The Board of Pensions of the Presbyterian Church \(U.S.A.\)](#)

Benefits Regional Summit: Support for Congregational Leaders (Irving)

Tuesday, April 21st, 10:00 AM-2PM, Woodhaven Presbyterian Church, Irving

Join us for an informative town hall designed to support pastoral leadership and congregational benefits decision-makers. Located throughout the country, the Benefits Regional Summits will provide important updates and insights into the Benefits Plan of the Presbyterian Church (U.S.A.) and related programs offered by the Board of Pensions.

Among the topics you will hear about are:

- Medical Plan cost trends and changes in the healthcare system
- dues package subsidies that would ease financial burdens for congregations, pastors, and their families
- plans and programs that support those who serve the Church, including Assistance Program enhancements

You will also have the opportunity to ask questions. Lunch will be served.

Our Benefits Regional Summit will take place on the following date and at the following location: Tuesday, April 21: Woodhaven Presbyterian Center, Irving, Texas.

Learn more and register here:

[Summary - Benefits Regional Summit: Support for Congregational Leaders \(Irving\)](#)

Planning Ahead...



May is Older Adult Week/Month
[Click here to find your resources](#)

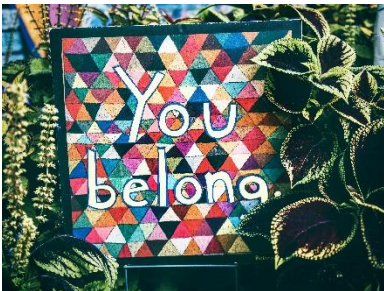
Looking for Pulpit Supply?

Rev. Naveen Nischal would love opportunities to serve in teaching (creation care and intercultural connection are areas of expertise) and pulpit supply. It is also an opportunity for congregations to have intercultural engagement and a different voice in preaching and teaching. Contact [Tammy Stepka](#) for the latest Occasional Supply List.

Resources

Essential Faith Practices

Books, Curriculum, Online and other essential resources are available. Just click the link below each image to be taken to each of the resources



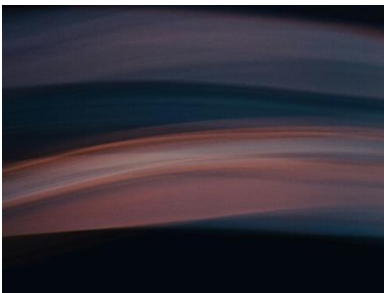
[Hospitality](#)



[Service Practice](#)



[Storytelling](#)



[Sabbath](#)



[Retreat](#)



[Faith Practice Ministry Kits](#)

What's happening?

Around Our Region...

St. Peter Presbyterian Church, Ft. Worth



gathers for Bible Study, Worship and fellowship every Sunday at 9:45

Pastors & Church Leaders Lunches

Pastor's Lunches are held throughout the West Region lunches each month. Check the Grace eNews for times and locations.



Ernest L. Gardner III Installation Service



Grace First, Weatherford, Chili Cookoff Winners



First Presbyterian, Granbury, Pizza & Game Night



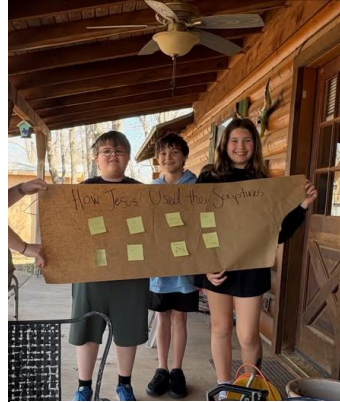
St. Stephen, Ft Worth



Evensong and Compline services are offered throughout the year.



Pancakes and Karaoke



Confirmand Retreat

Westminster, Arlington



Scout Sunday

Trinity, Flower Mound



Interfaith Iftar gathering at the mosque



Michael Waschevski

Lisa Patterson

Angela Madden-Scott & David Slyter

Fred Thrower

Joshua Stewart

Brian Coulter

April 14

April 17

April 19

April 23

April 26

April 27

Stay in touch: keep up on all the latest Presbytery happenings. Subscribe to the Grace eNews: [Grace Presbytery](#)

Get In Touch: email: sharon@gracepresbytery.org phone: (817) 736-6808.



[Grace Resource Center](#)



[Disaster Preparedness](#)



[For Congregations](#)



[Presbyterian Resources](#)